

Onna Kikaku Oteai sponsored by
Mainichi Denpo

White: Kita Fumiko 3p

Black: Inoue Misako 2p

1907-06-03

Komi: 0

Result: W+R

Diagram 1: 1-50

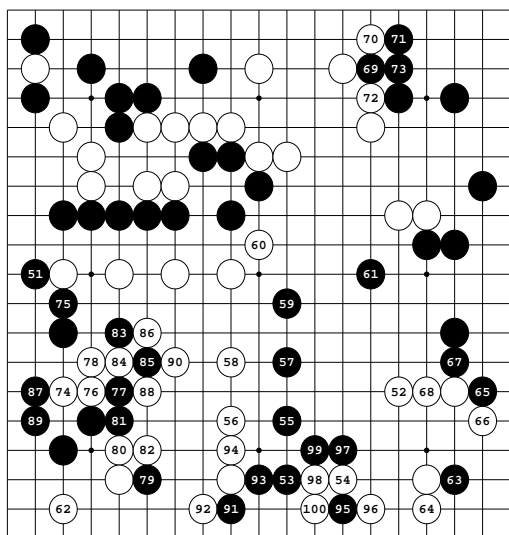


Diagram 2: 51-100

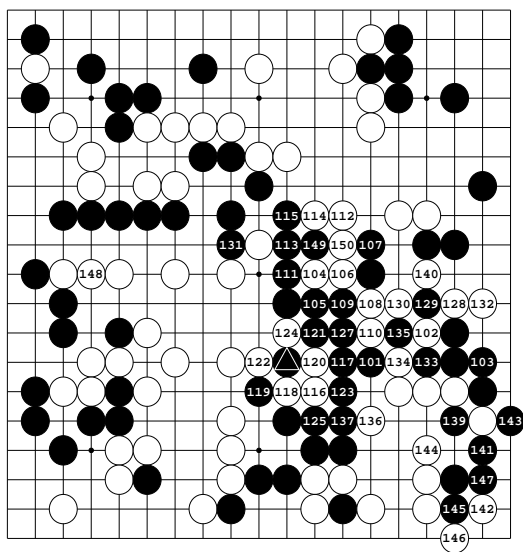




Diagram 3: 101-150

126 at ,
138 at 

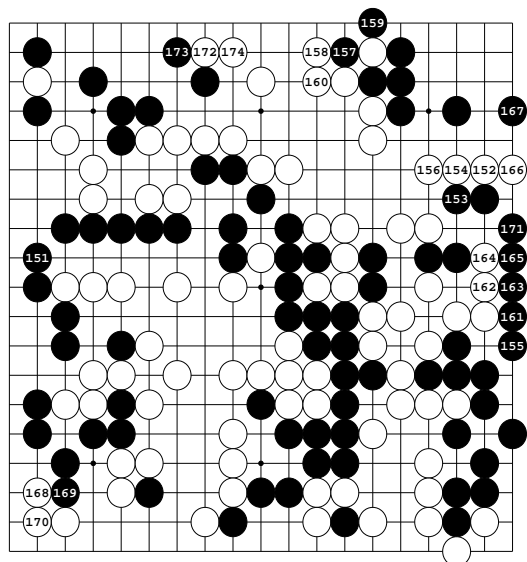


Diagram 4: 151-174

Onna Kikaku Oteai sponsored by
Mainichi Denpo

White: Kita Fumiko 3p

Black: Tsuzuki Yoneko 3p

1907-06-04

Komi: 0

Result: B+R

Diagram 1: 1-50

● at ○

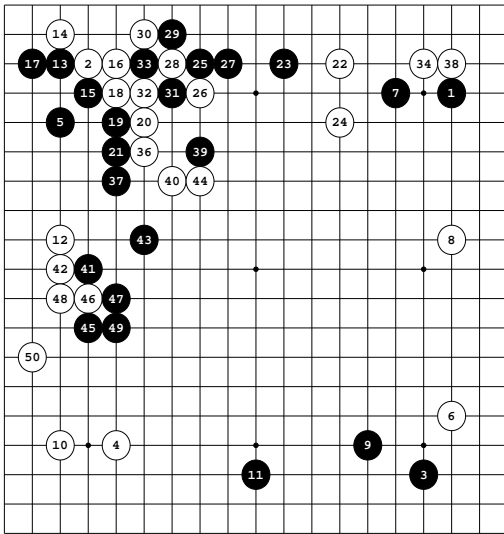


Diagram 2: 51-100

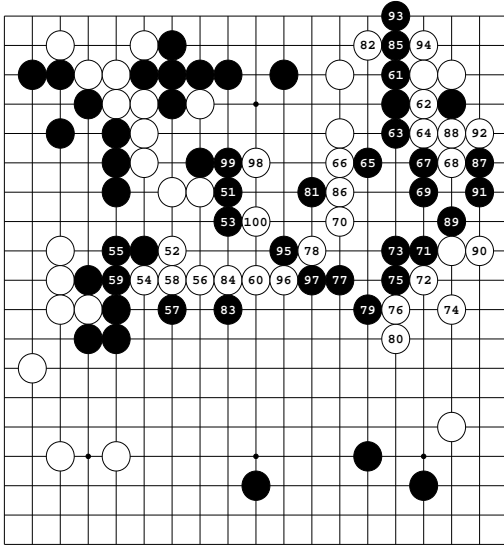
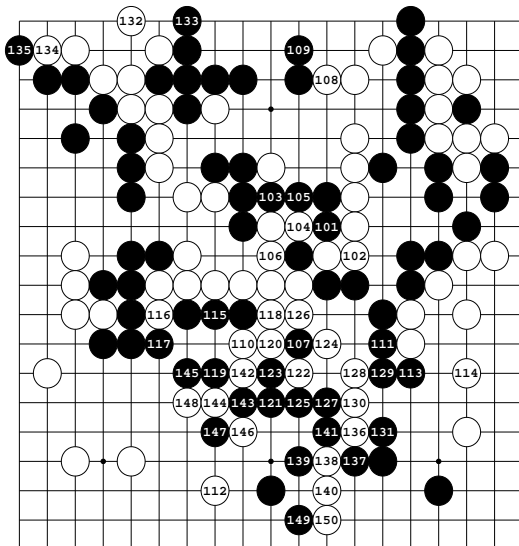


Diagram 3: 101-150



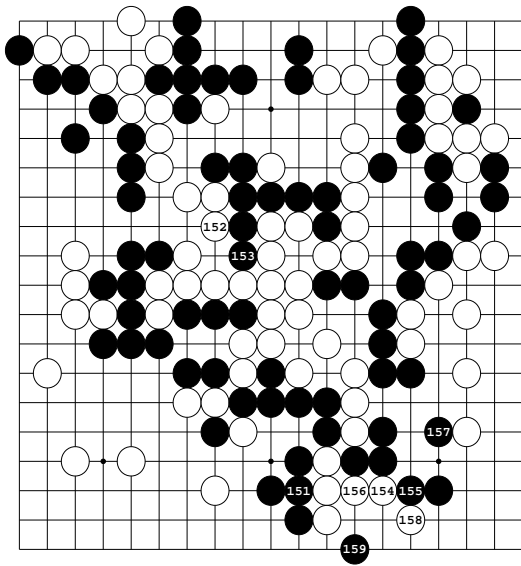


Diagram 4: 151-159

Black: Kita Fumiko 3p

Komi: 0

Diagram 1: 1-50

Diagram 2: 51-100

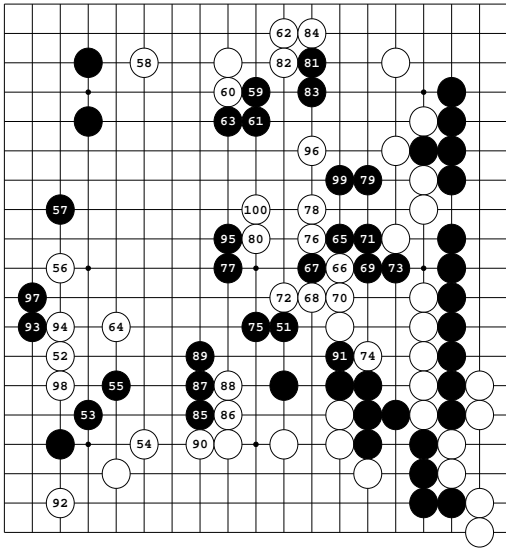
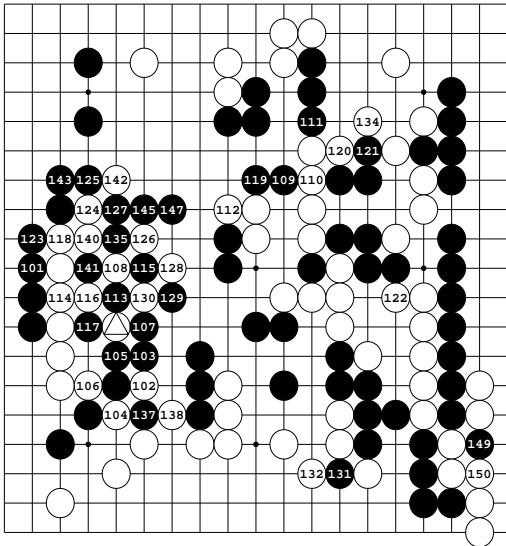












Diagram 3: 101-150



,  at ,
,  at ,
 at ,
 at 

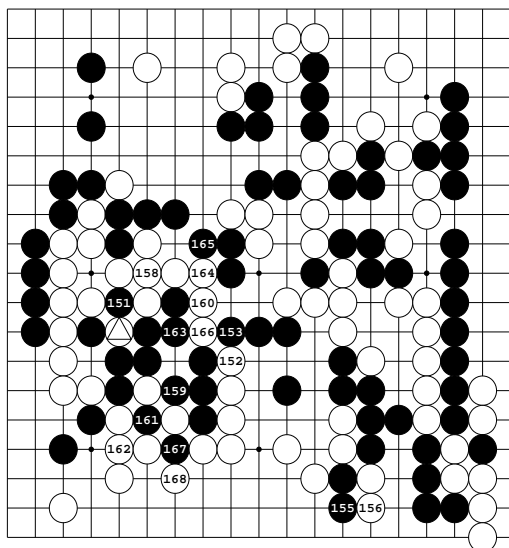



Diagram 4: 151-168

154 at ,
 157 at 151

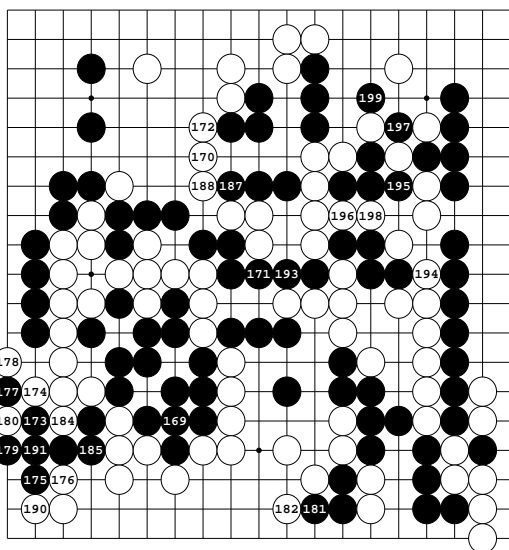
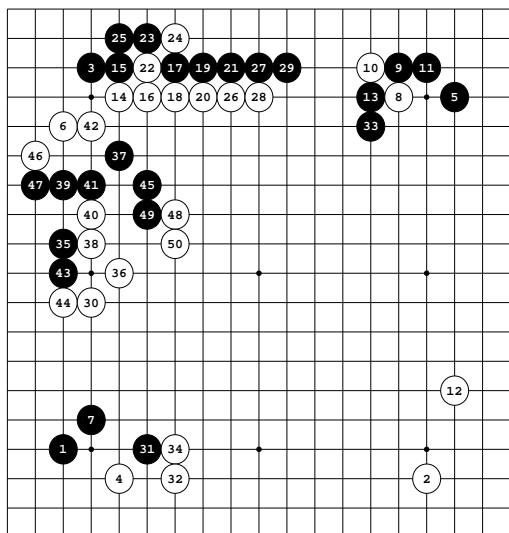


Diagram 5: 169-200

183, 189, 200 at 177,
 186, 192 at 180



White: Nozawa Chikuchō 4p

Black: Kita Fumiko 3p

1908-12-02

Komi: 0

Result: W+R

Diagram 1: 1-50

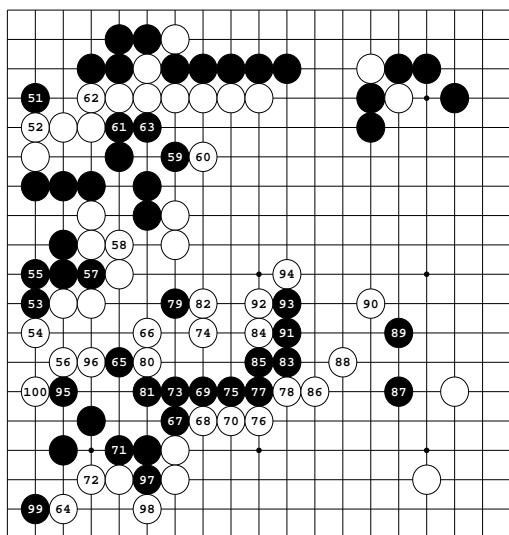


Diagram 2: 51-100

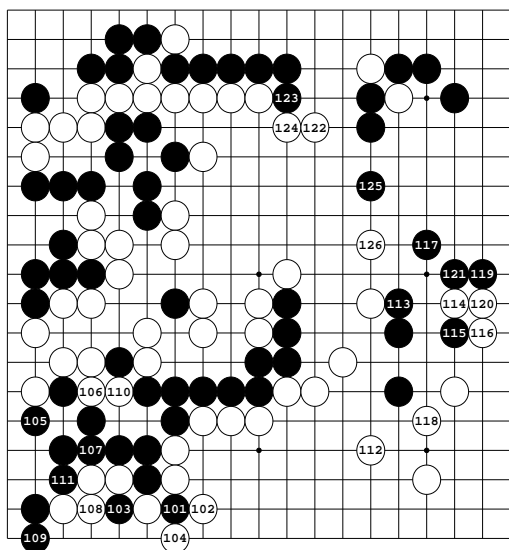
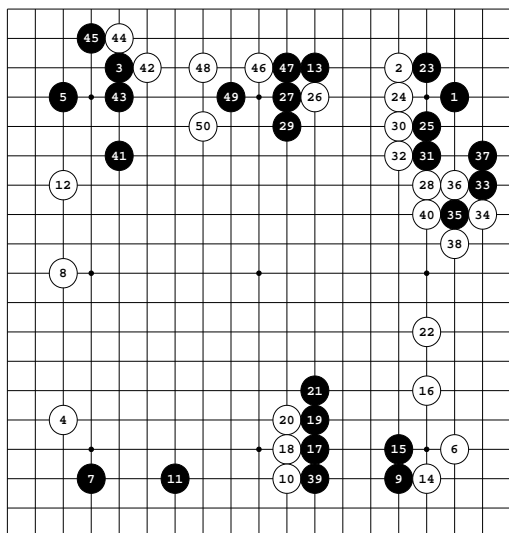


Diagram 3: 101-126



White: Kita Fumiko 3p
 Black: Nozawa Chikucho 4p
 1909-02-18
 Komi: 0
 Result: B+R
 Diagram 1: 1-50

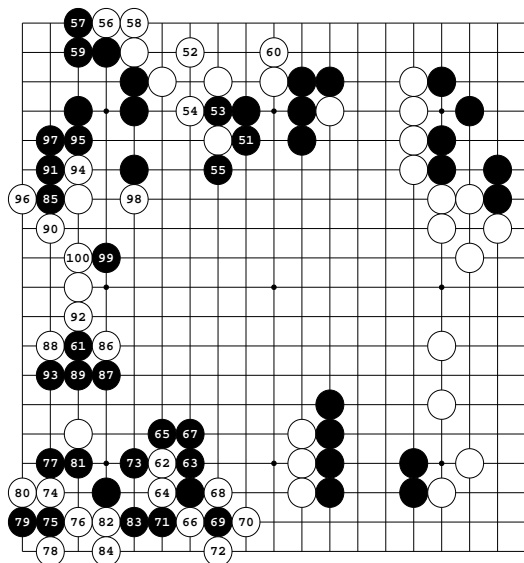


Diagram 2: 51-100

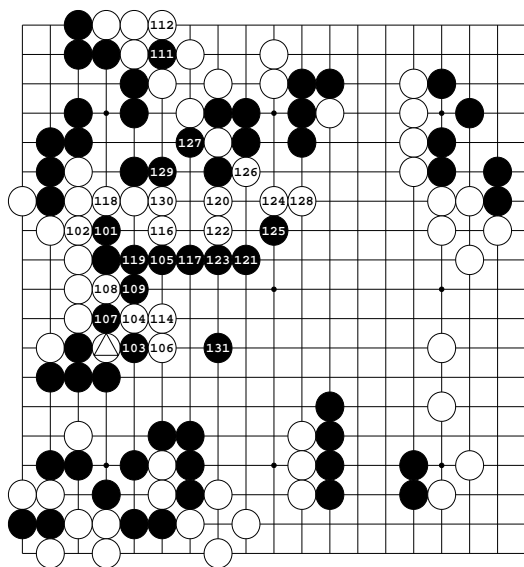
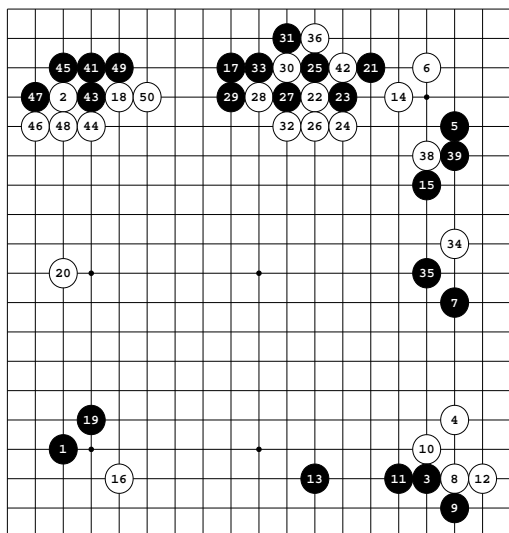


Diagram 3: 101-131

⊙, ● at △,
 ● at ●



Young Go Players' Games of Blood,
sponsored by Tokyo Nichinichi Shinbun

White: Suzuki Tamejiro 3p

Black: Kita Fumiko 3p

1909-12-09

Komi: 0

Result: B+R

Diagram 1: 1-50

● at ●,
○ at ○

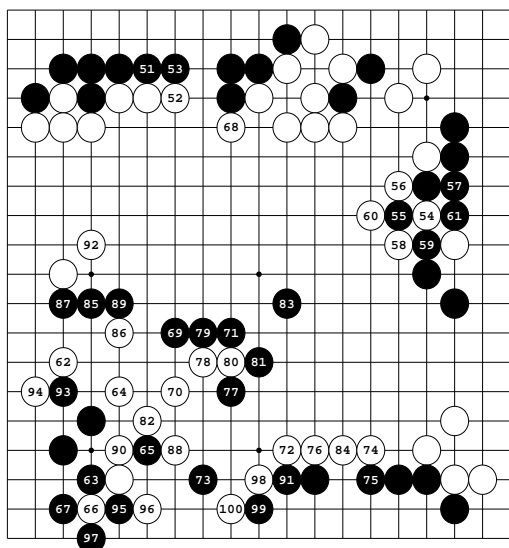


Diagram 2: 51-100

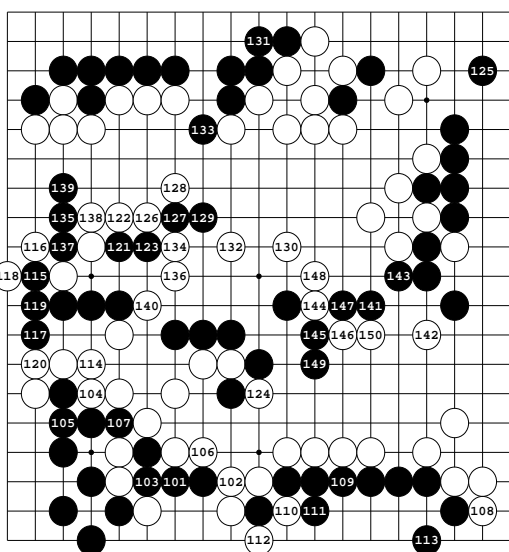
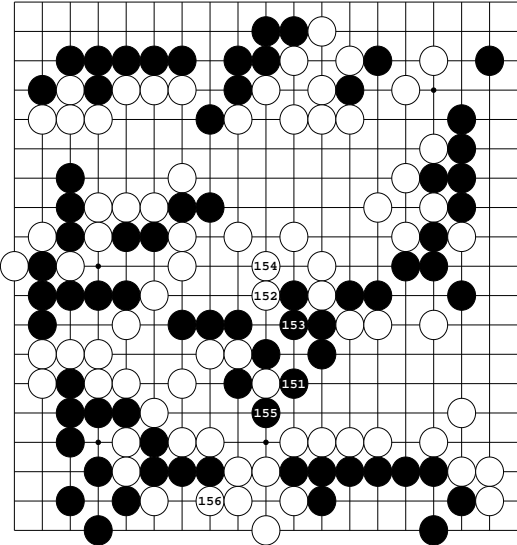
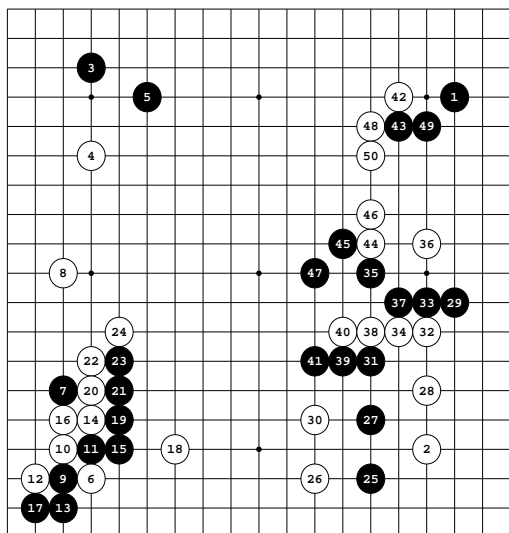


Diagram 3: 101-150

Diagram 4: 151-156





White: Nozawa Chikucho 4p

Black: Kita Fumiko 3p

1910-01-02

Komi: 0

Result: W+R

Diagram 1: 1-50

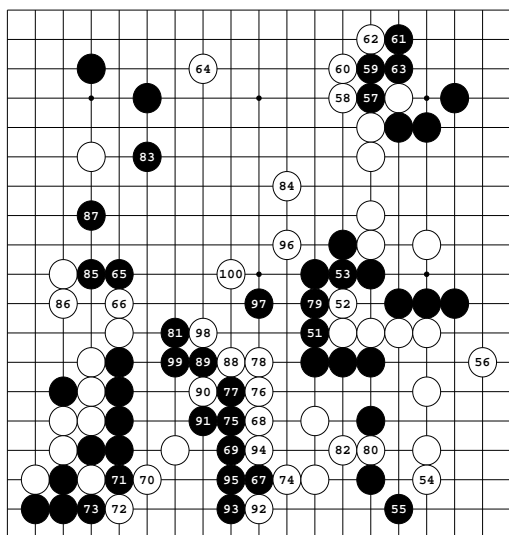


Diagram 2: 51-100

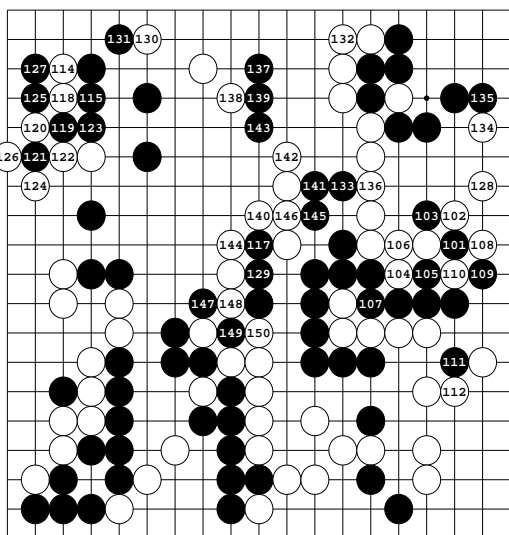


Diagram 3: 101-150

● at ●,
○ at ○

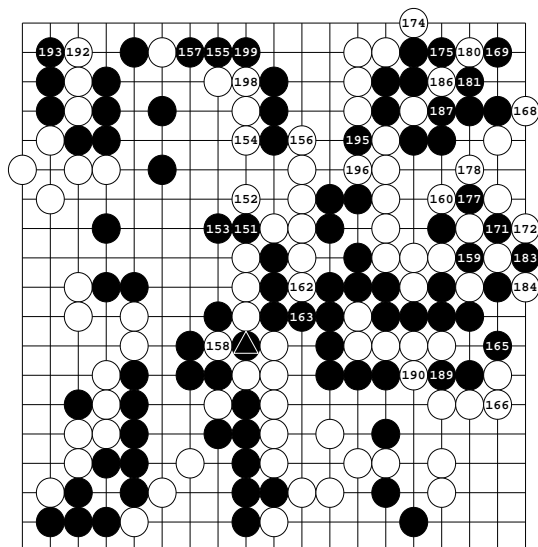


Diagram 4: 151-200

161, 167, 173, 179, 185, 191, 197 at ,
 164, 170, 176, 182, 188, 194, 200 at 

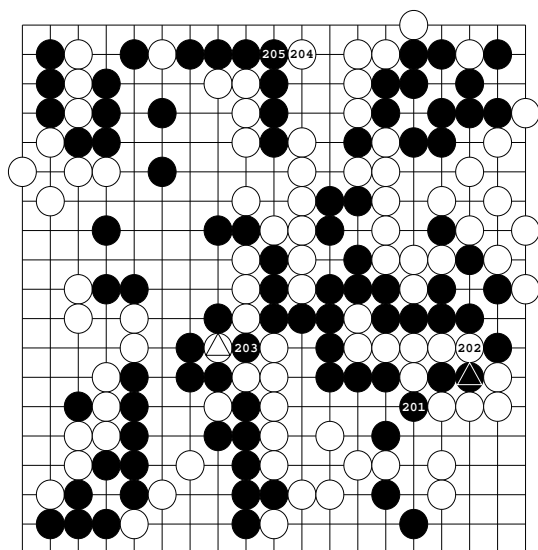


Diagram 5: 201-207

206 at ,
 207 at 

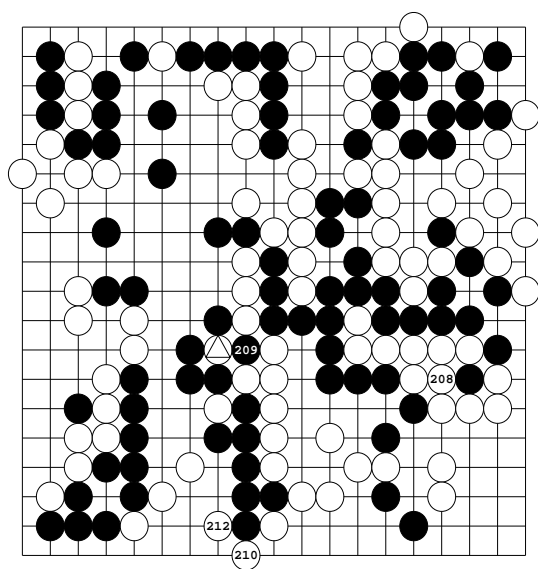
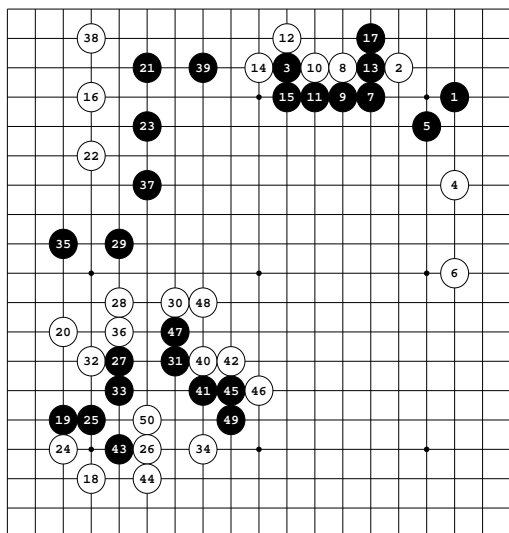


Diagram 6: 208-212

211 at 



White: Nozawa Chikucho 4p

Black: Kita Fumiko 3p

1910-02-26

Komi: 0

Result: W+R

Diagram 1: 1-50

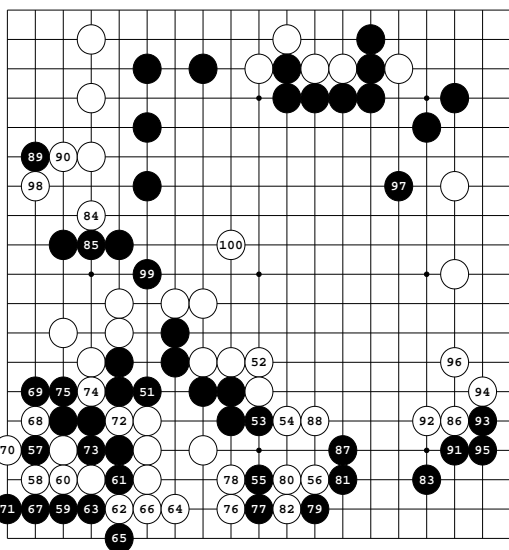


Diagram 2: 51-100

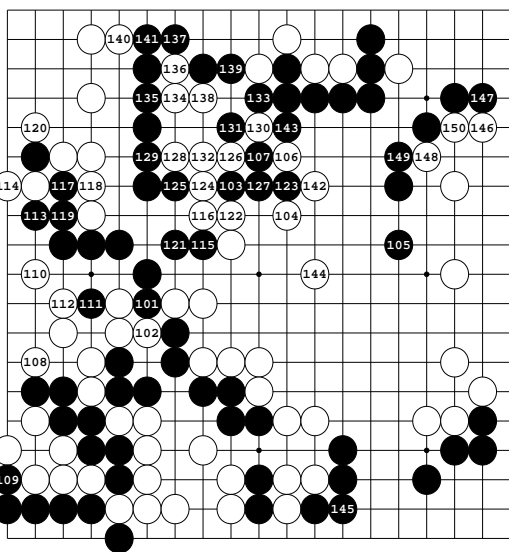
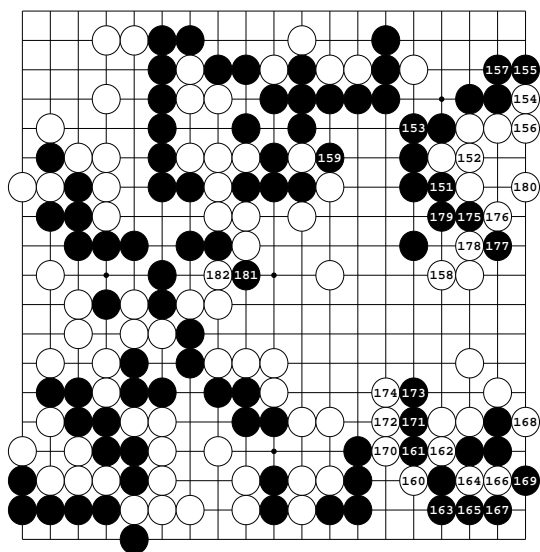
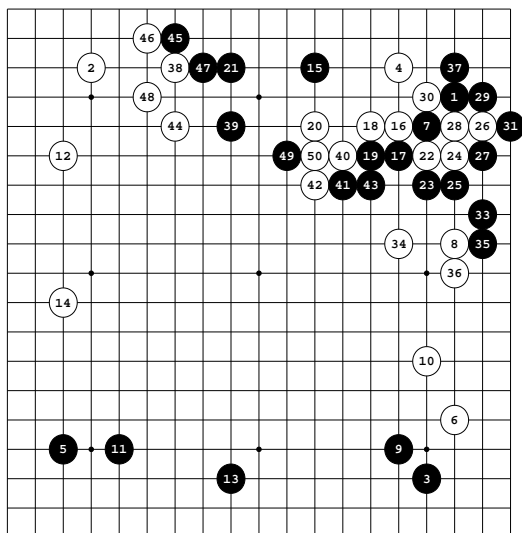


Diagram 3: 101-150

Diagram 4: 151-182





White: Nozawa Chikucho 4p

Black: Kita Fumiko 3p

1910-06-30

Komi: 0

Result: Jigo

Diagram 1: 1-50

32 at 7

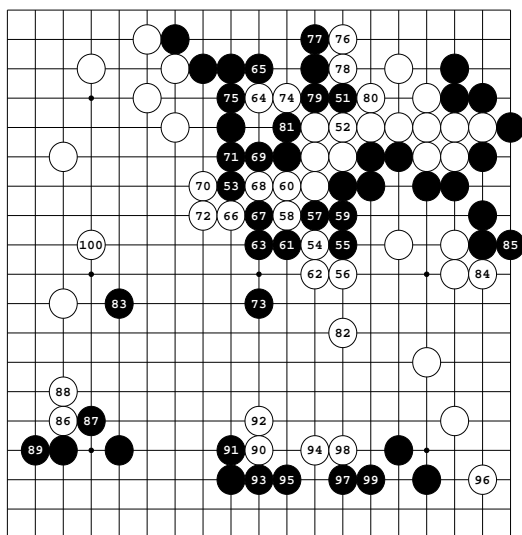


Diagram 2: 51-100

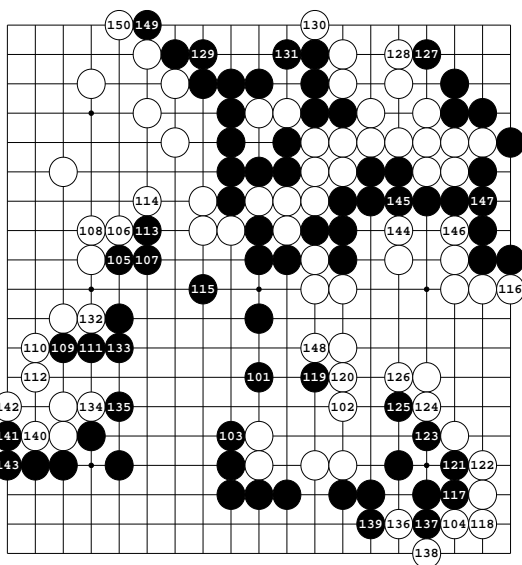


Diagram 3: 101-150

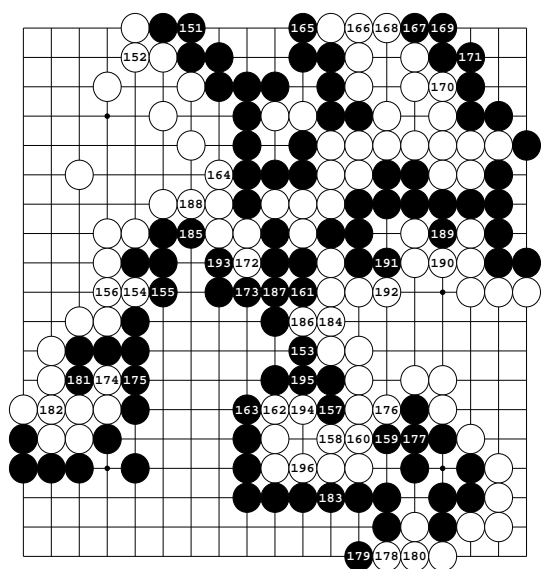
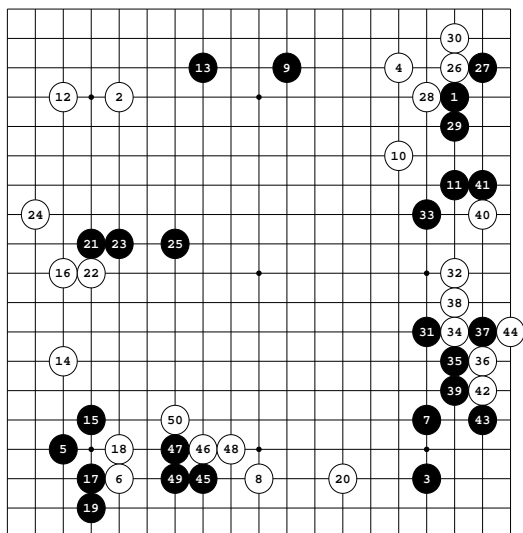


Diagram 4: 151-196



White: Nozawa Chikuchō 4p

Black: Kita Fumiko 3p

1910-07-10

Komi: 0

Result: B+R

Diagram 1: 1-50

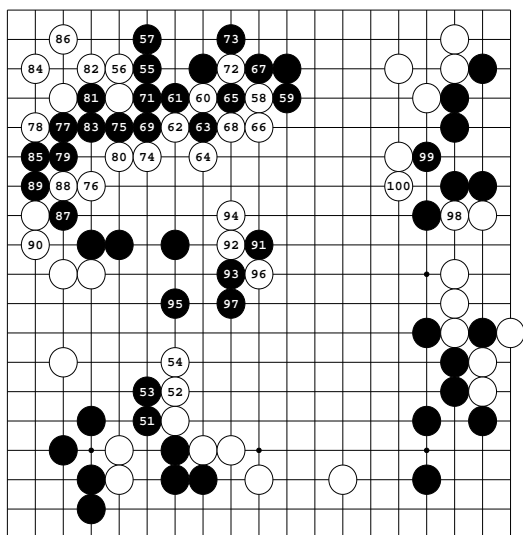


Diagram 2: 51-100

⬤ at ⬤

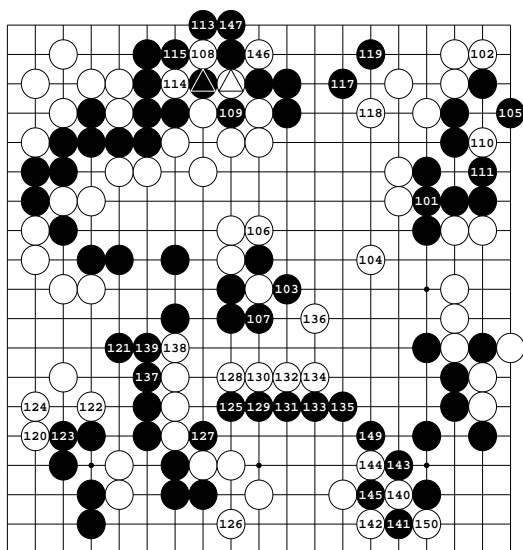


Diagram 3: 101-150

⬤ at ⬤,

⬤ at ⬤,

⬤ at ⬤

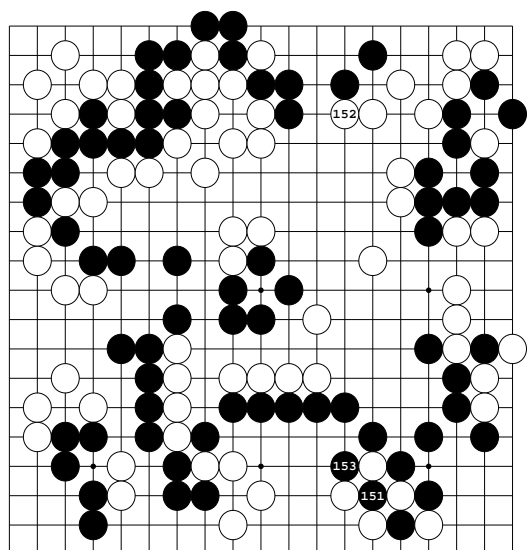


Diagram 4: 151-153

Yorozu Choho Game 164 and Senshu Taiko 29

White: Nozawa Chikucho 4p

Black: Kita Fumiko 3p

1910-11-01

Komi: 0

Result: W+7 {moves beyond 258 not known}

Diagram 1: 1-50

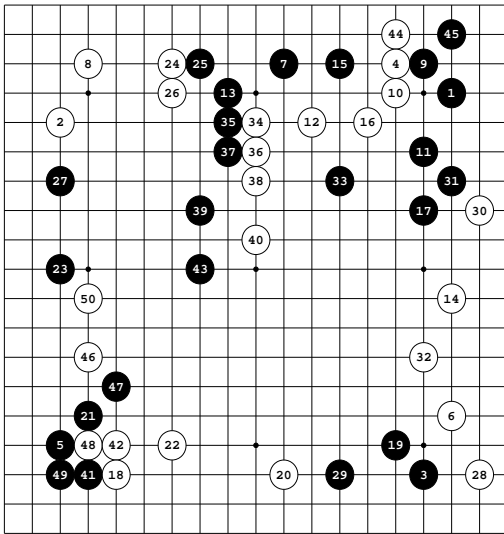


Diagram 2: 51-100

67 at 57

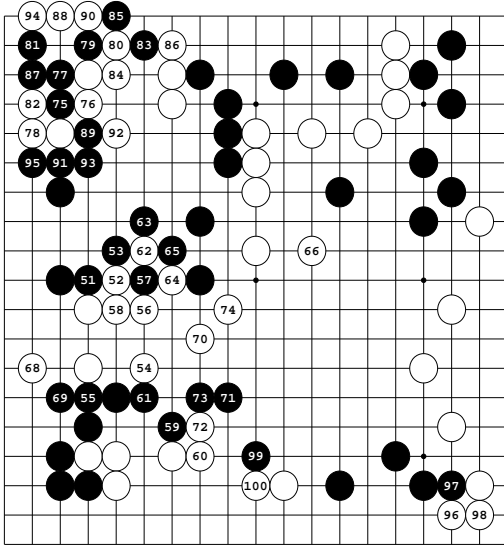
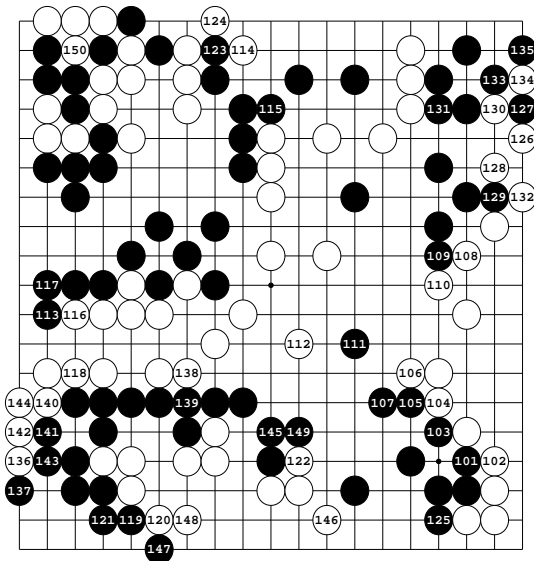


Diagram 3: 101-150



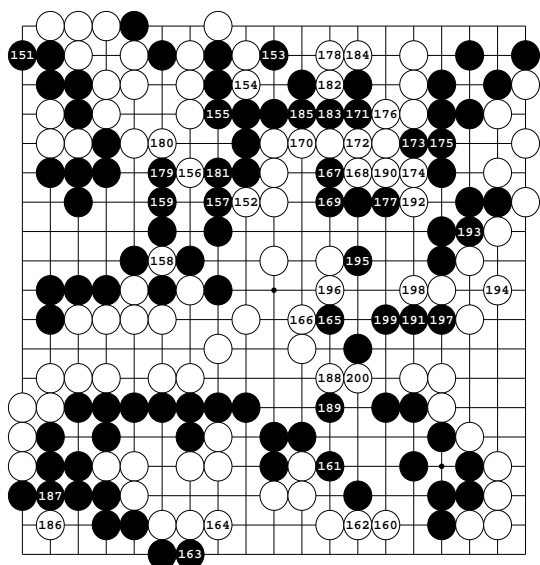


Diagram 4: 151-200

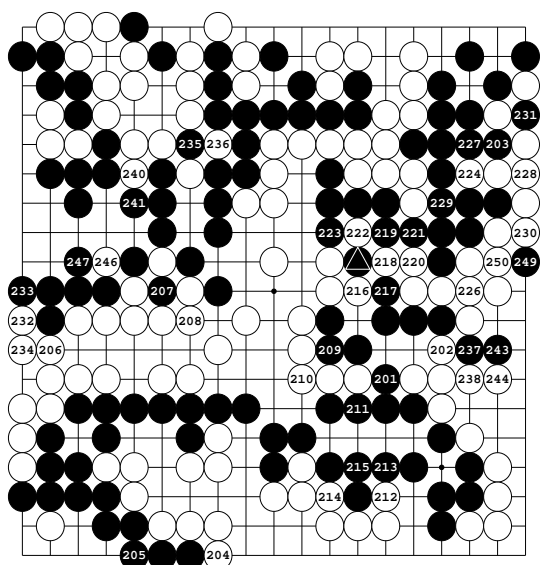


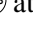



Diagram 5: 201-250

225 at ,
 239, 245 at ,
 242,  at 

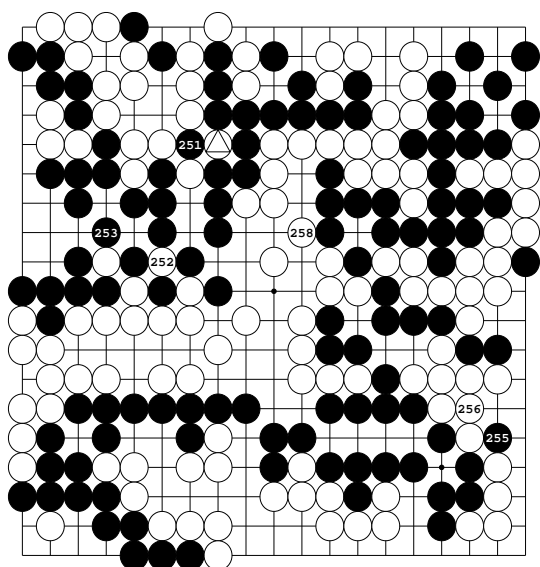



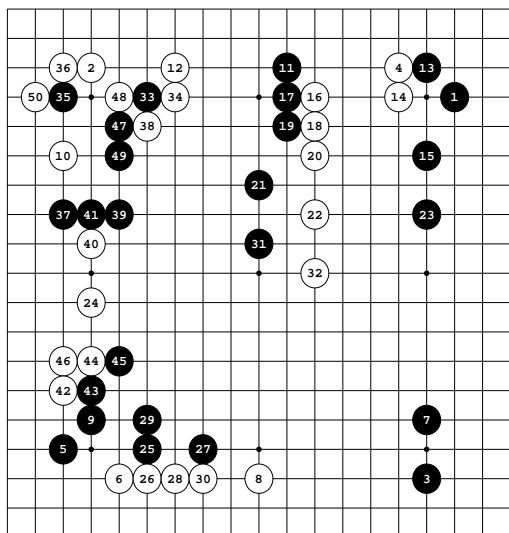


Diagram 6: 251-258

 at ,
 257 at 



White: Nozawa Chikuchō 4p

Black: Kita Fumiko 3p

1911-06-24

Komi: 0

Result: W+R

Diagram 1: 1-50

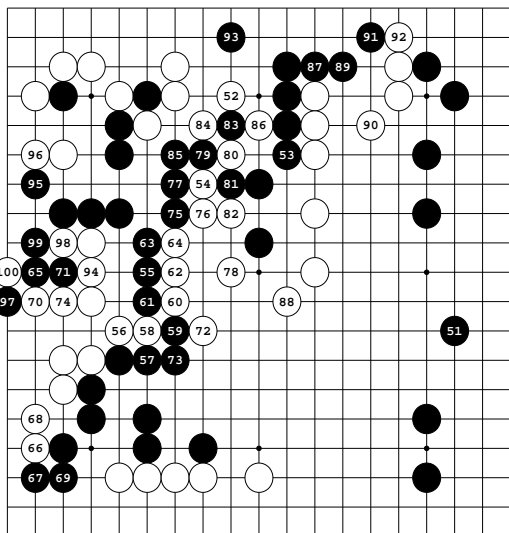


Diagram 2: 51-100

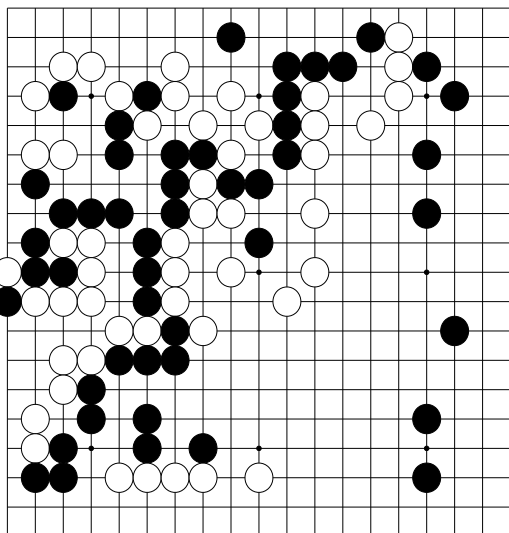
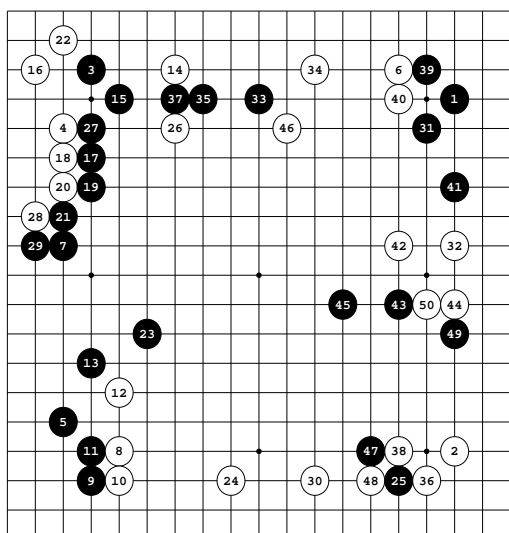


Diagram 3



White: Nozawa Chikucho 4p

Black: Kita Fumiko 4p

1912-03-28

Komi: 0

Result: B+1

Diagram 1: 1-50

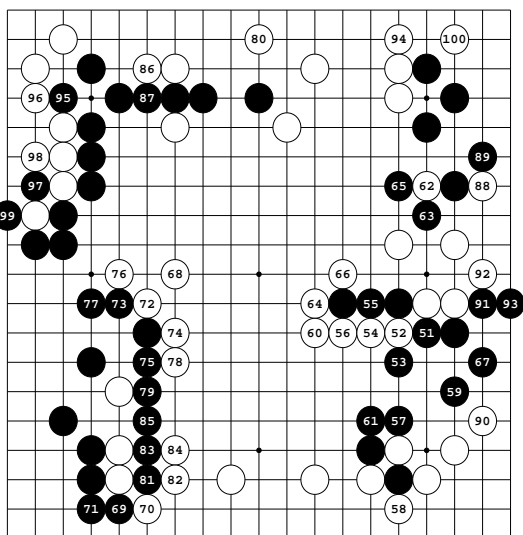


Diagram 2: 51-100

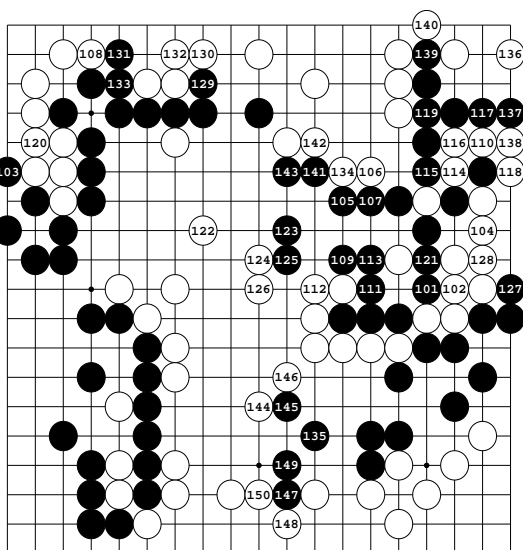


Diagram 3: 101-150

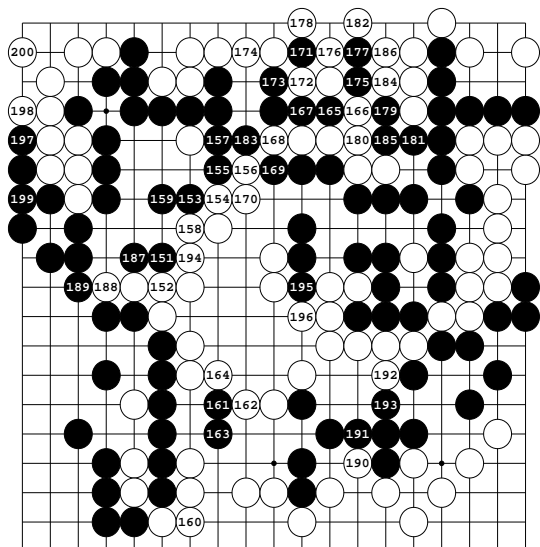


Diagram 4: 151-200

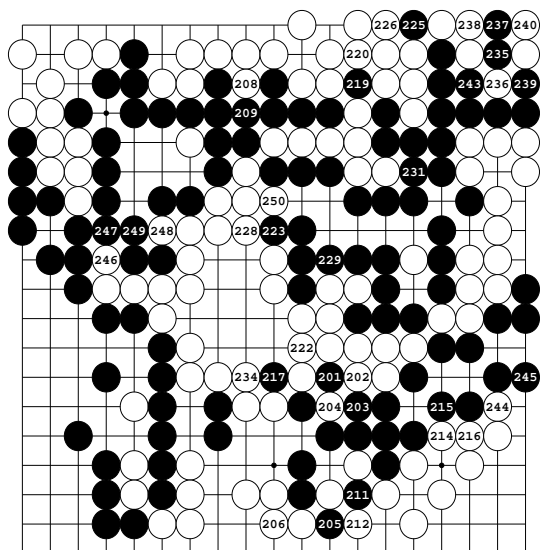


Diagram 5: 201-250

207, 213, 221, 227, 233 at 201,
 210, 218, 224, 230 at 204,
 232 at 219,
 241 at 235,
 242 at 237

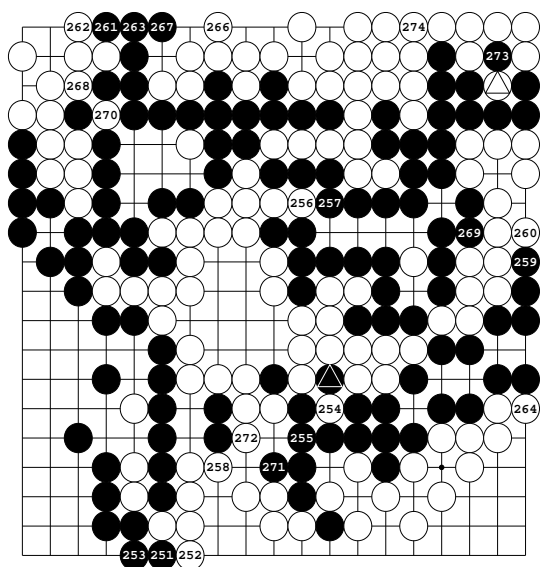


Diagram 6: 251-275

265 at ,
 275 at 

Yorozu Choho Tournament 178 and Champions' Matches Game 41

White: Inoue Kohei 3p

Black: Kita Fumiko 3p

1912-04-15

Komi: 0

Result: B+R

Diagram 1: 1-50

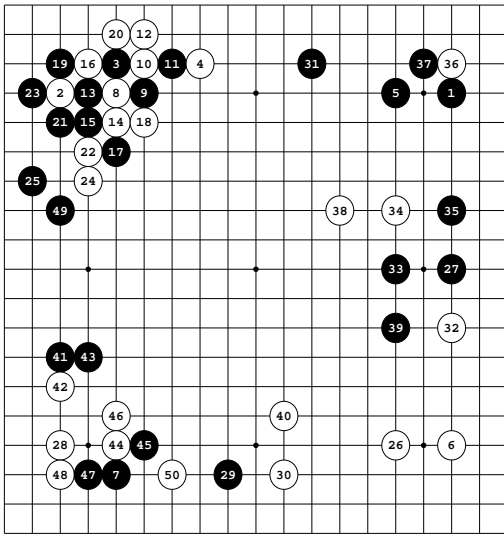


Diagram 2: 51-100

●₈₉, ●₉₅ at ●₈₁,
○₉₂, ○₉₈ at ○₈₆

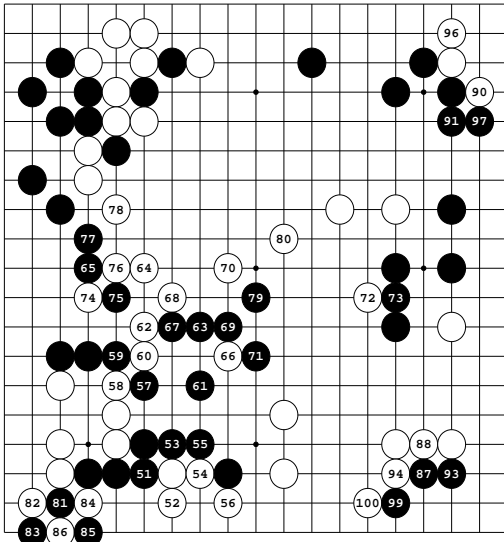
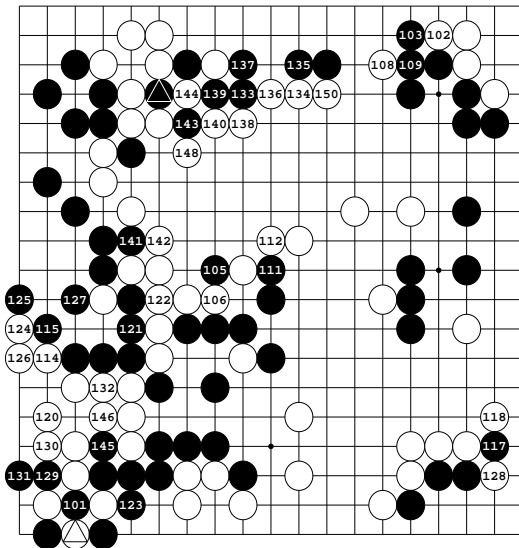


Diagram 3: 101-150

○₁₀₄, ○₁₁₀, ○₁₁₆ at △₁₀₁,
●₁₀₇, ●₁₁₃, ●₁₁₉ at ●₁₀₁,
●₁₄₇ at △₁₄₄,
●₁₄₉ at ○₁₄₄



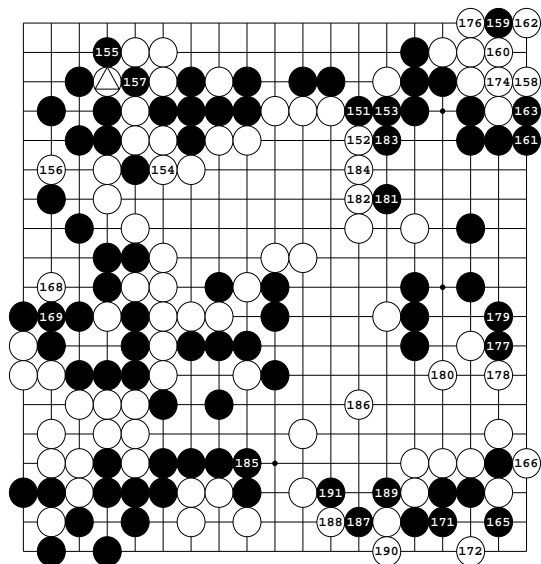

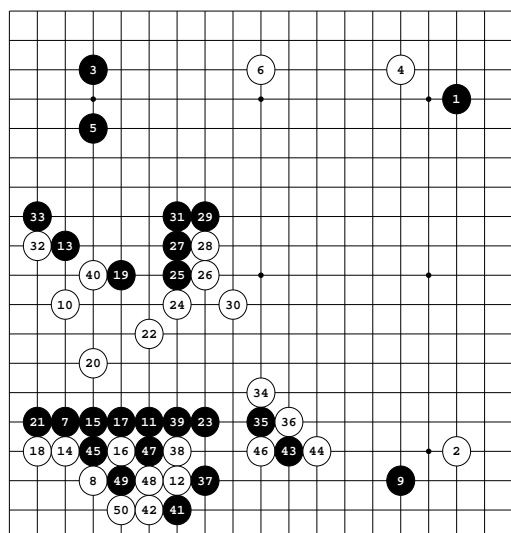


Diagram 4: 151-191

164, 170, 175 at ,
 167, 173 at 157



White: Nozawa Chikucho 4p

Black: Kita Fumiko 4p

1913-06-12

Komi: 0

Result: W+R

Diagram 1: 1-50

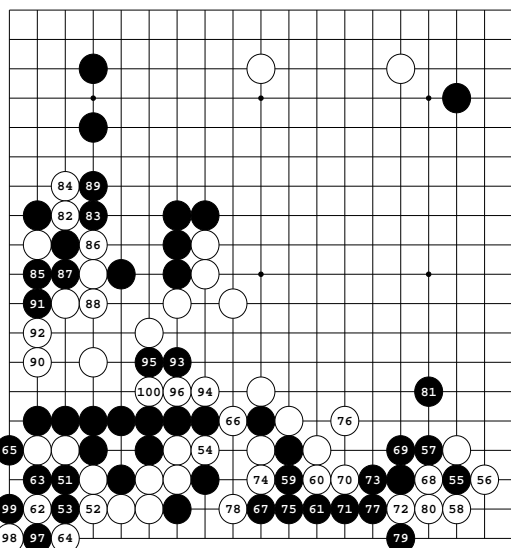


Diagram 2: 51-100

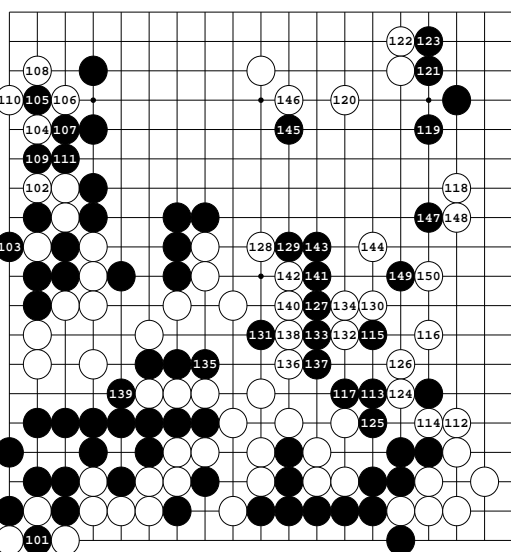


Diagram 3: 101-150

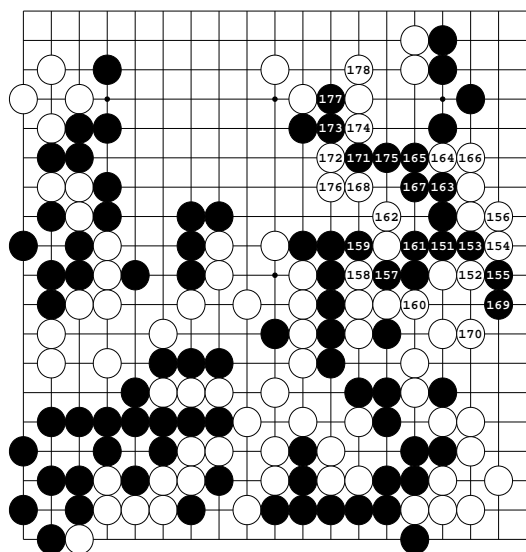
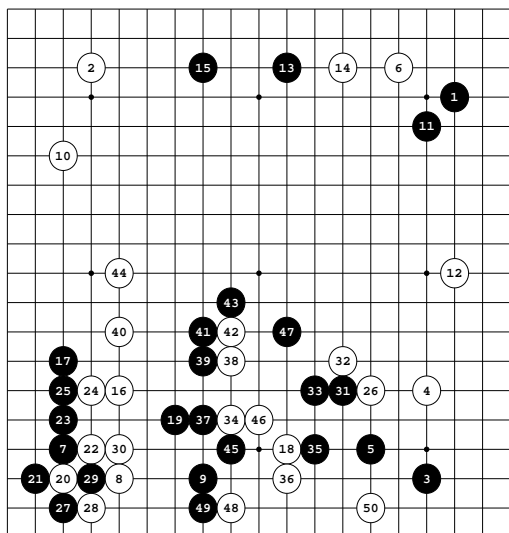


Diagram 4: 151-178



White: Kita Fumiko 4p
 Black: Segoe Kensaku 4p
 1914-11-00
 Komi: 0
 Result: B+
 Diagram 1: 1-50

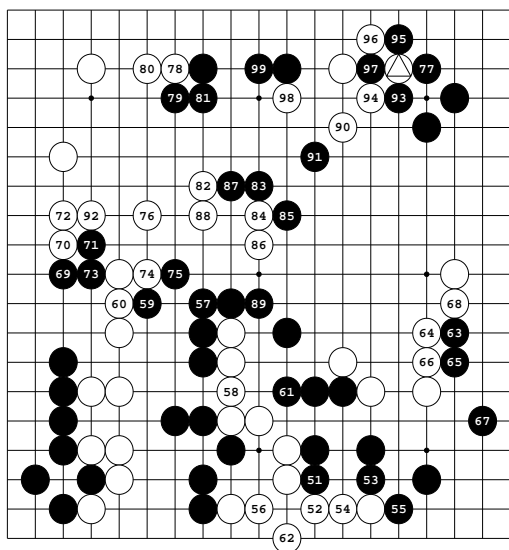


Diagram 2: 51-100
 100 at

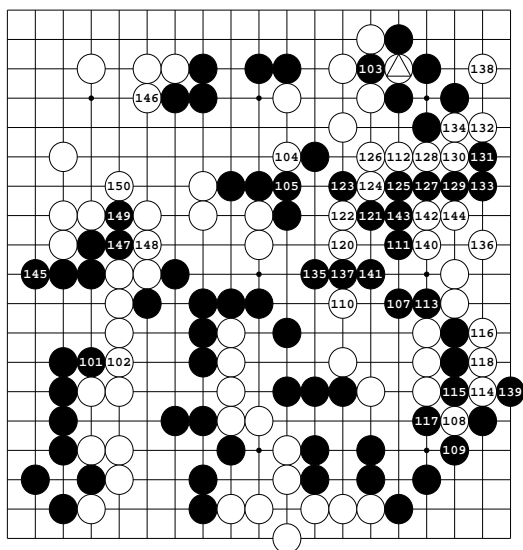


Diagram 3: 101-150
 106 at ,
 119 at

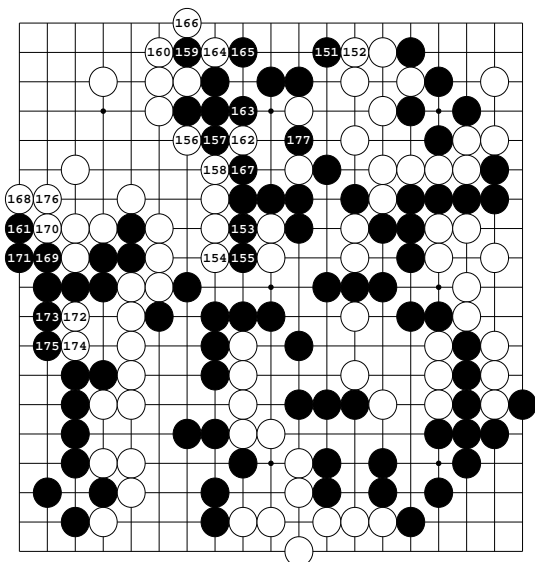
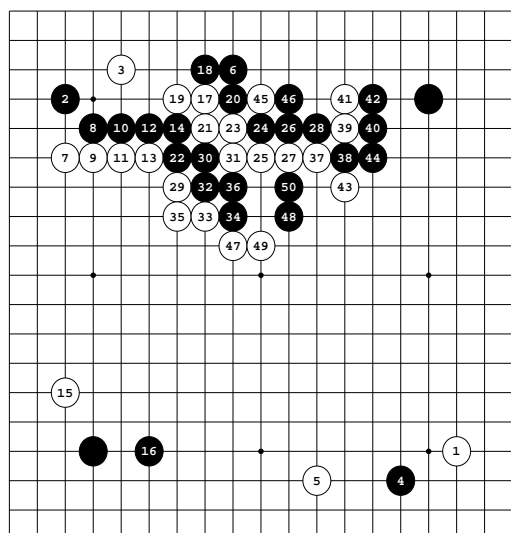


Diagram 4: 151-177



White: Honinbo Shusai 9p
 Black: Kita Fumiko 4p
 1914-12
 Result: W+R
 Diagram 1: 1-50

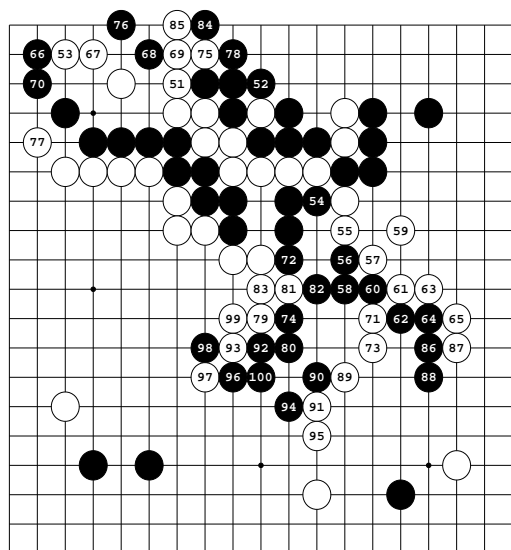


Diagram 2: 51-100

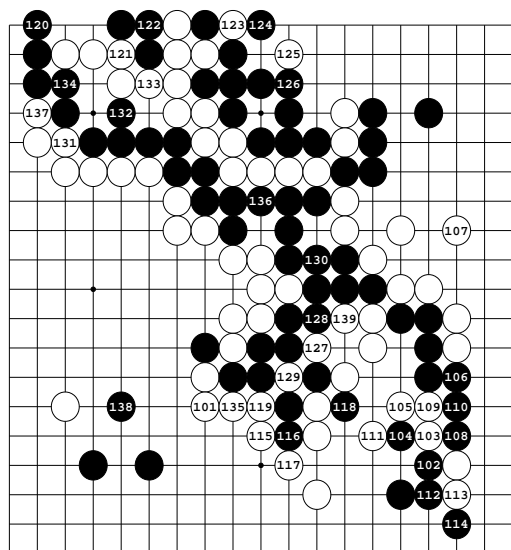
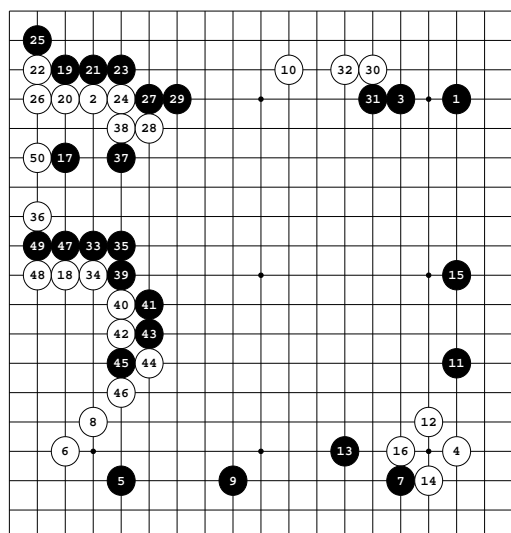


Diagram 3: 101-139



White: Kita Fumiko 3p
Black: Kato Shin 1p
1915

Komi: 0

Result: B+2

Diagram 1: 1-50

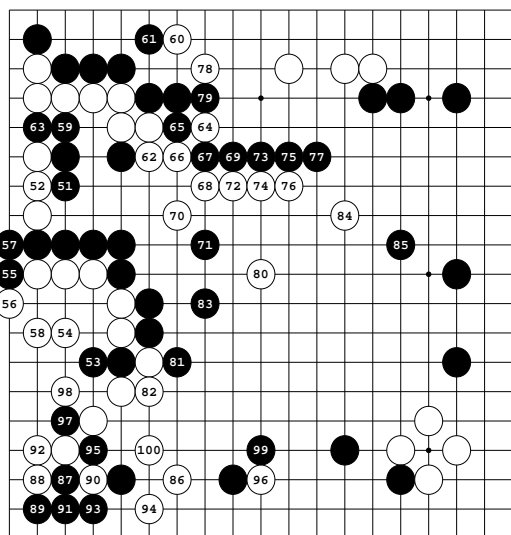


Diagram 2: 51-100

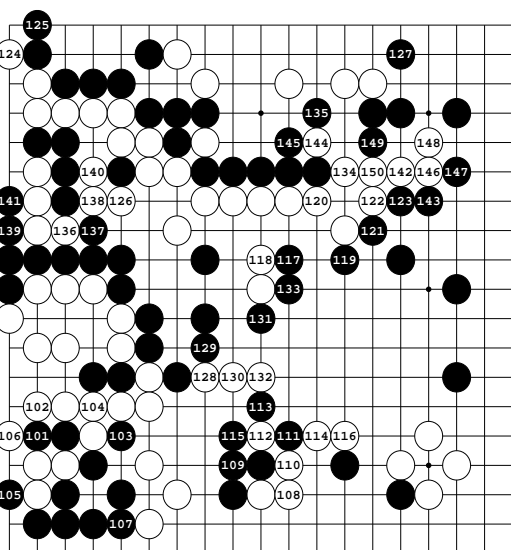


Diagram 3: 101-150

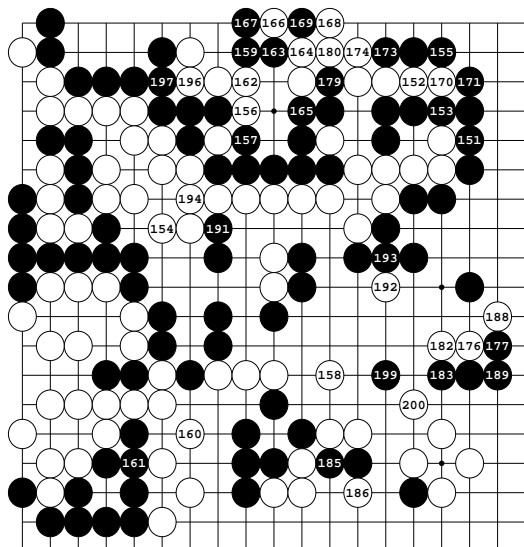


Diagram 4: 151-200

172, 178, 184, 190, 198 at 166,
 175, 181, 187, 195 at 169

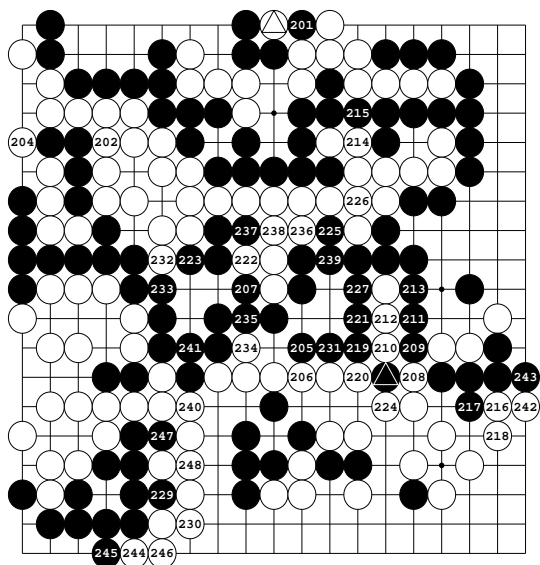

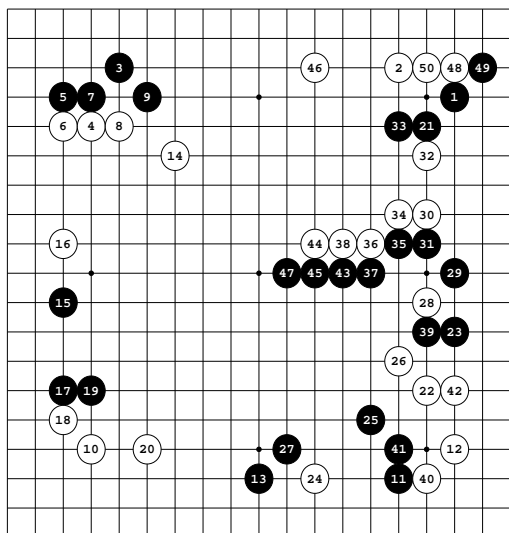


Diagram 5: 201-248

203 at ,
 228 at 



White: Kita Fumiko 5p
 Black: Segoe Kensaku 6p
 1922-04-09
 Komi: 0
 Result: B+
 Diagram 1: 1-50

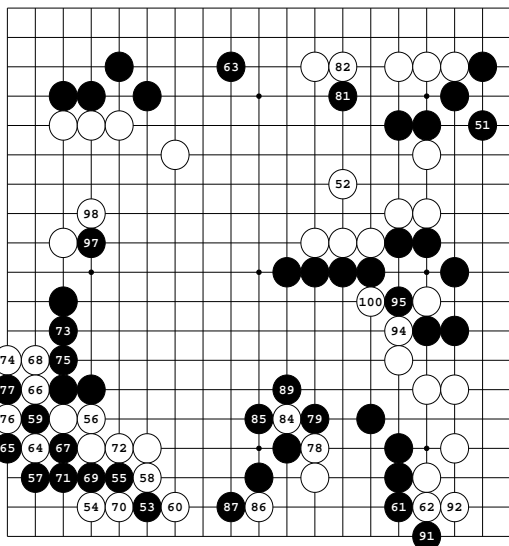


Diagram 2: 51-100

(80), (88) at (76),
 (83) at (77),
 (90), (96) at (64),
 (93), (99) at (59)

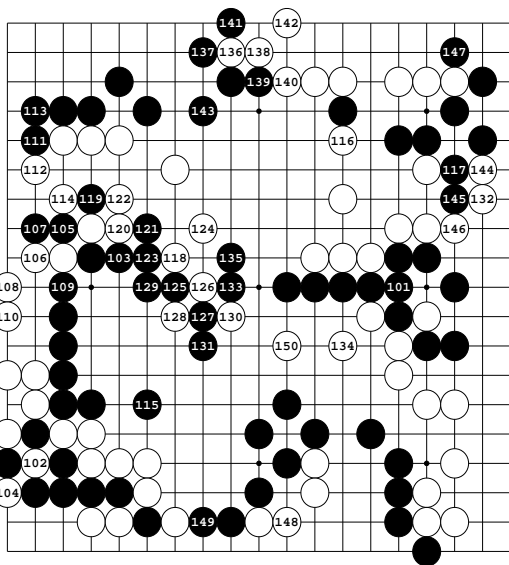


Diagram 3: 101-150

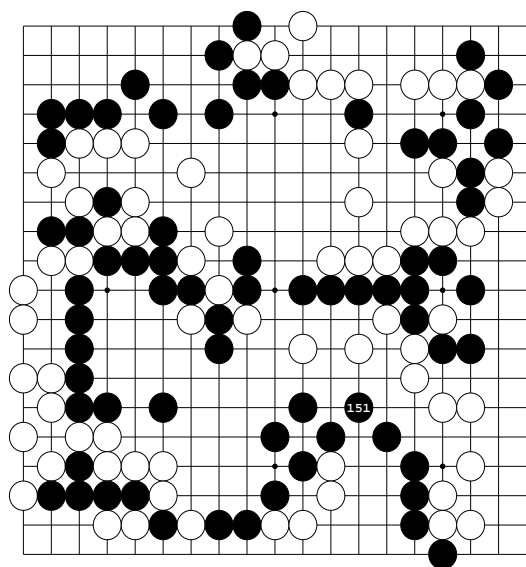
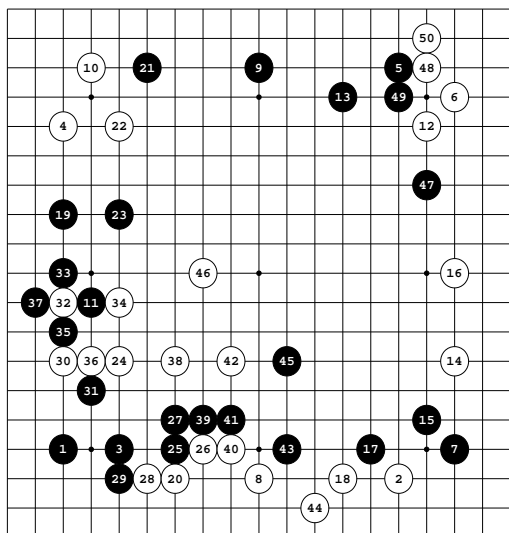


Diagram 4: 151



White: Segoe Kensaku 6p

Black: Kita Fumiko 5p

1922-07-16

Komi: 0

Result: B+3

Diagram 1: 1-50

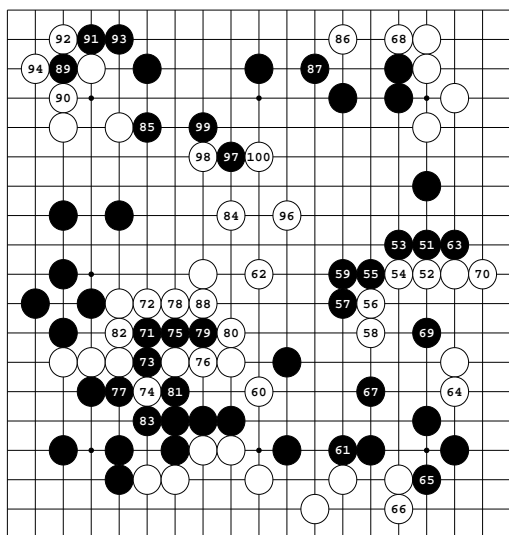


Diagram 2: 51-100

●₉₅ at ○₇₄

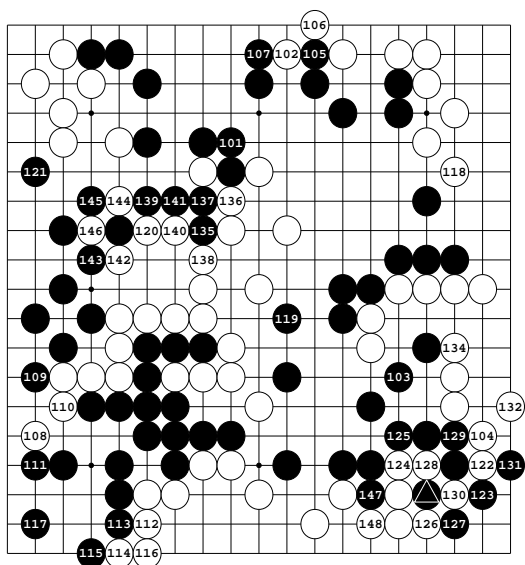


Diagram 3: 101-148

●₁₃₃ at △

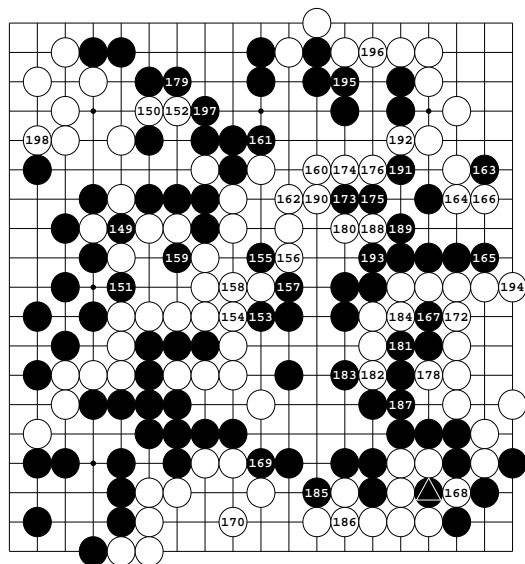




Diagram 4: 149-198

171 at ,
177 at 

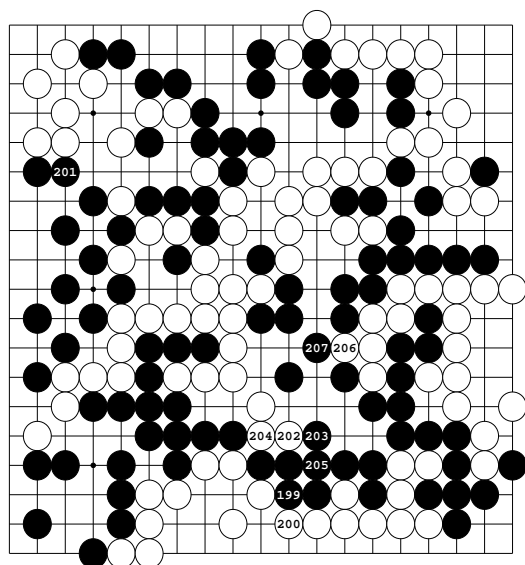
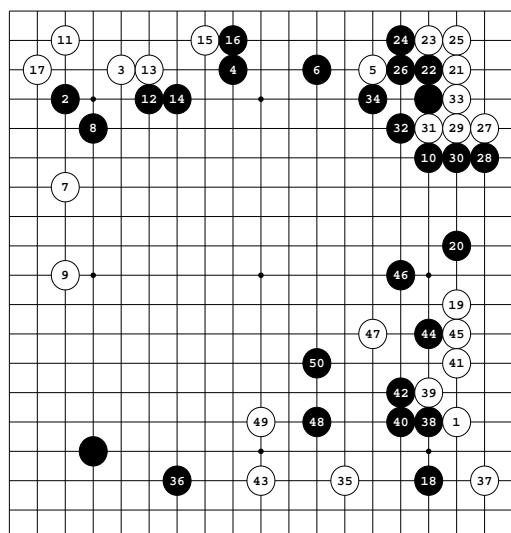


Diagram 5: 199-207



Go meeting in memory of Inukai Kido

White: Honinbo Shusai 1p

Black: Kita Fumiko 5p

1932-07-23

Result: Left unfinished

Diagram 1: 1-50

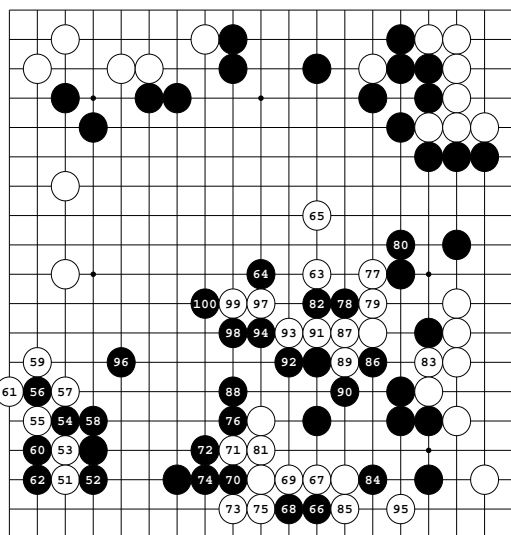


Diagram 2: 51-100

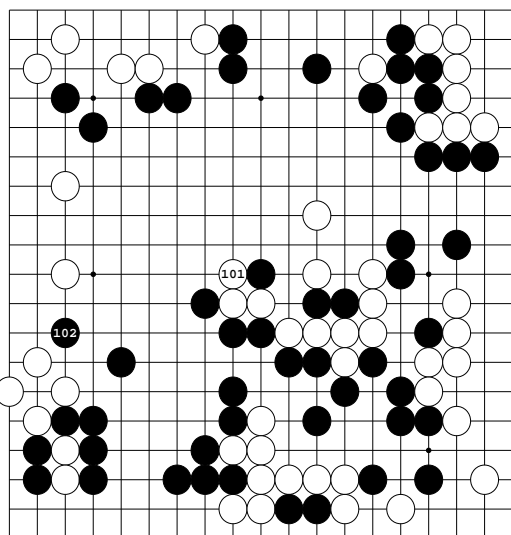


Diagram 3: 101-102