

# 10th Samsung Cup, semi-final 3

2005-12-16: Choi Cheolhan 9p(black) -- Luo Xihe 9p(white)  
W+7.5 (Komi 6.5)

Diagram 1 (1 - 50)

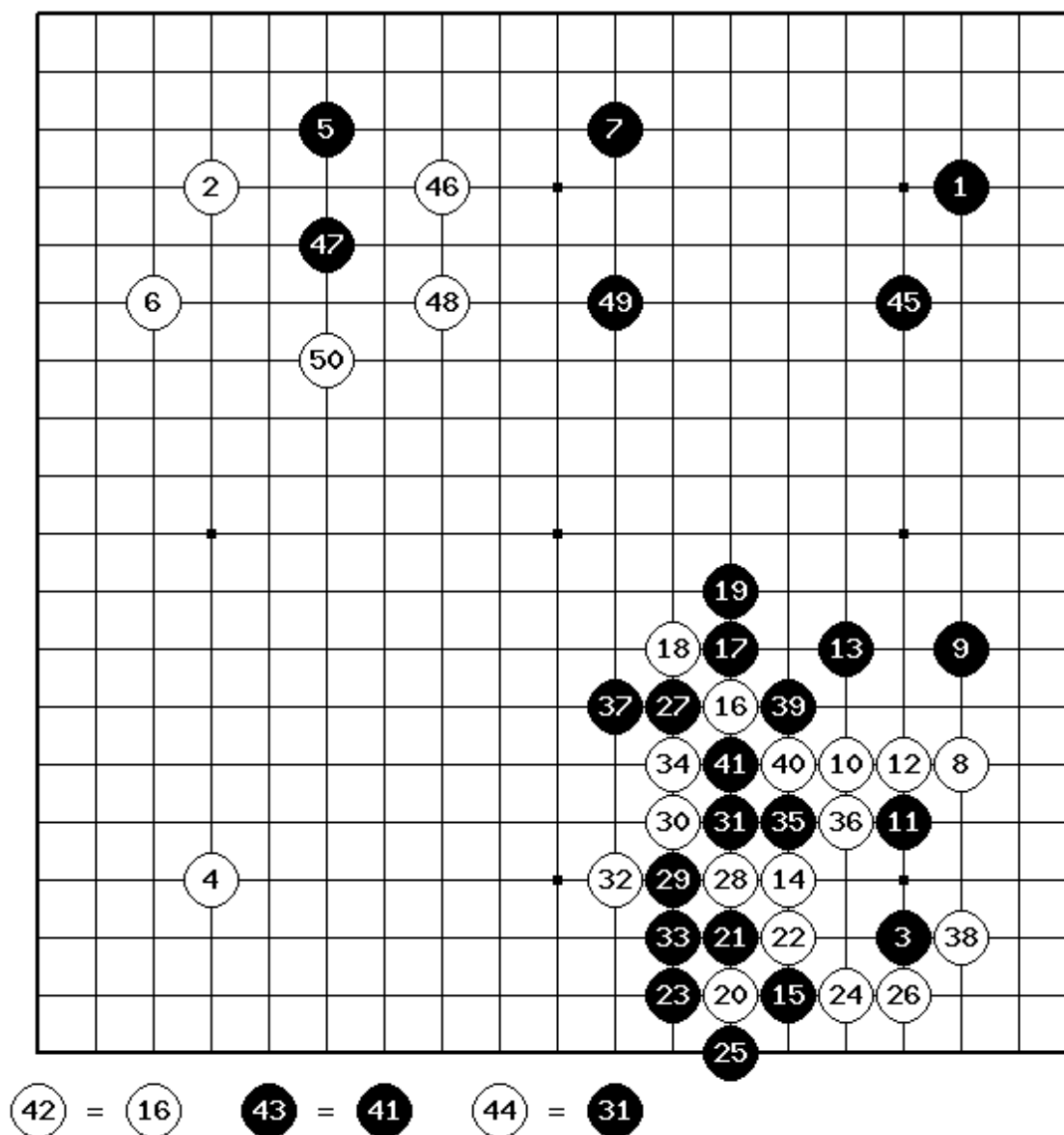
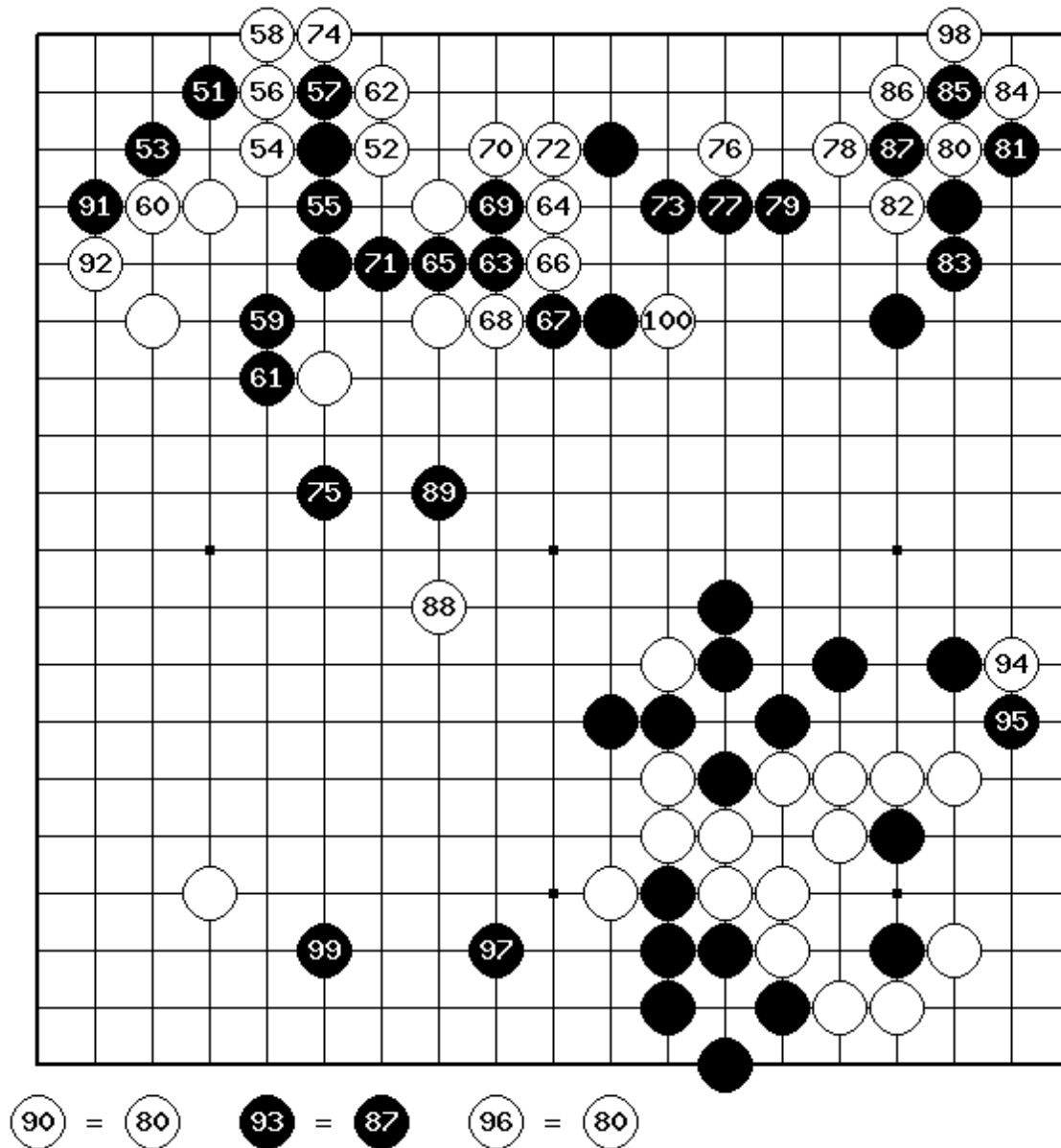
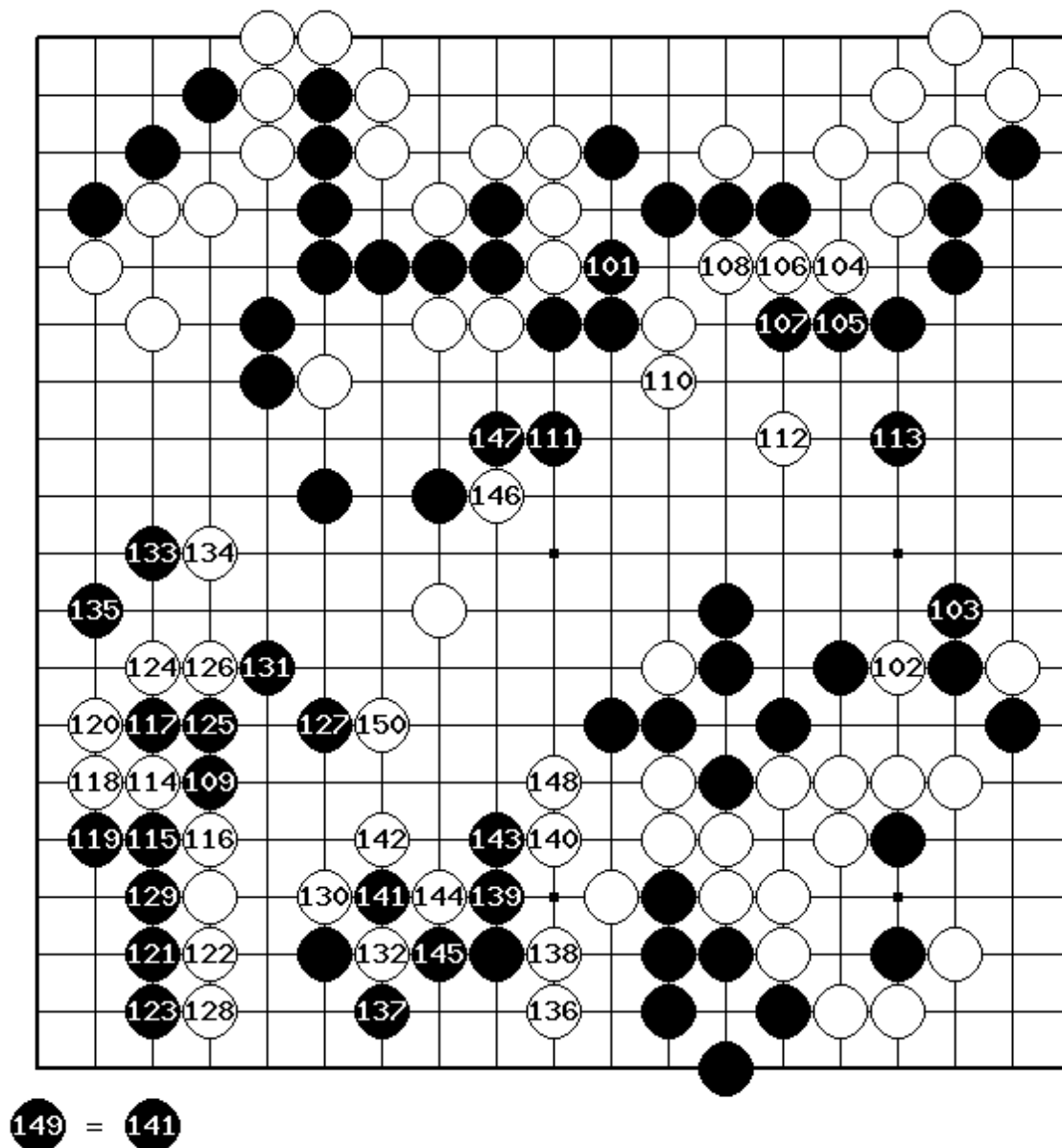


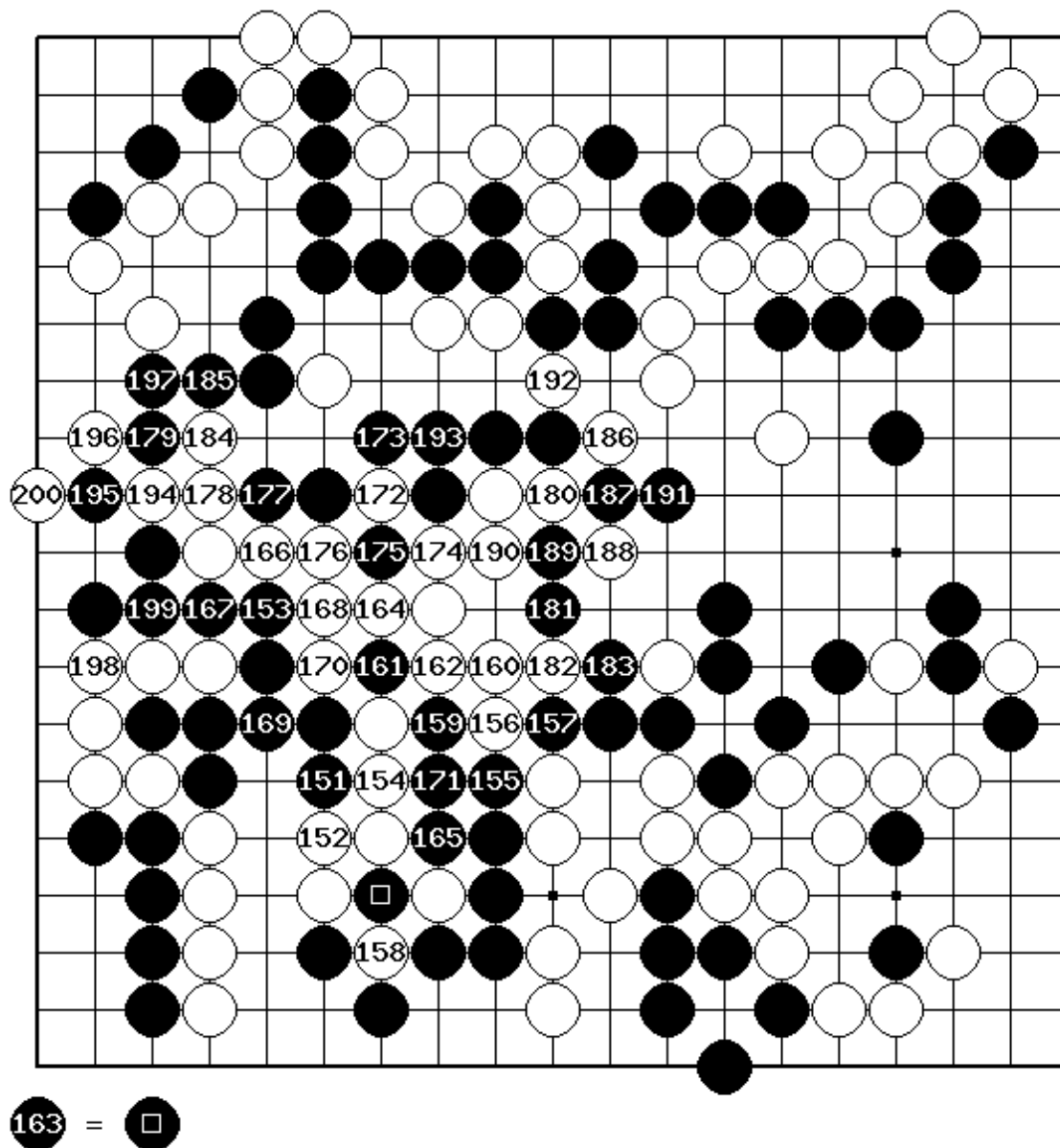
Diagram 2 (51 - 100)



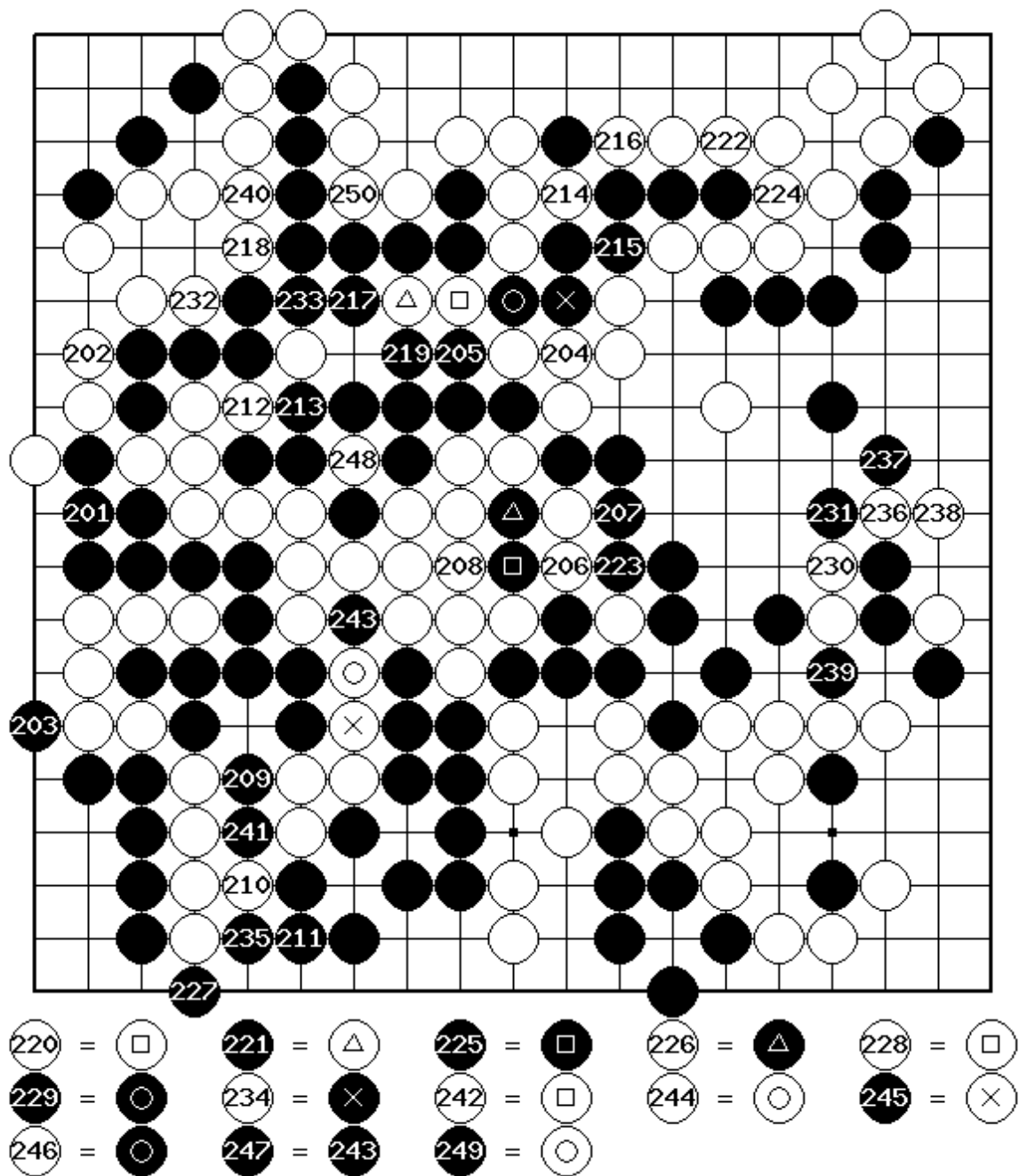
**Diagram 3 (101 - 150)**



**Diagram 4 (151 - 200)**



**Diagram 5 (201 - 250)**



**Diagram 6 (251 - 293)**

